

## Cloth Mask Pattern with Three Layers and Tie Options



### What wearing a cloth mask will do for you:

- Keep you from touching your nose and mouth and getting infected from germs on your hands (but remember: don't touch your eyes either!)
- Keep you from infecting other people by coughing or sneezing infectious droplets onto your hands or other surfaces
- Protect your nose and mouth from large infectious droplets from other people's cough or sneeze

### What wearing a mask will NOT do for you:

- Keep you from inhaling or spreading germs in the tiny water particles that we all breathe out in the course of normal breathing

**Remember, social distancing and good and frequent hand washing/sanitizing are your best defense against COVID-19!**

- Avoid gatherings of more than 10 people from different households where people must stand less than 2 meters apart.
- Wash or sanitize your hands often, especially when you have touched things that many other people have also touched

## Materials:

- 3 pieces of fabric, 9" x 8" each. Fabrics with a tight weave are better than a loose weave.
- Template for marking pleats (full size template is on the last page of instructions)



- Wire, 4" piece. Ideally flat, and should not be a material that can rust because the mask will need to be washed. The wire in the model is 1/8" wide copper bezel wire (source is [www.riogrande.com](http://www.riogrande.com), item # 132225. This is thin and soft enough to cut with scissors (but not your good fabric scissors!) This is a 1 lb. spool of 160 feet, so will make about

480 masks. Cost is \$29. Share one with your sewing friends!)

- Grosgrain ribbon, 3/8" wide, 2 pieces of 5". This is to hold the pleated ends of the mask together. Other material could be substituted.
- Material for ties or elastic: There are several options.
  - Flat elastic, 1/8" or 1/4" wide. Length will depend on the stretchiness of the material. See page 7-8
  - Elastic cord. Again, length will depend on the stretchiness of the material. See pages 8-9.
  - 2 pieces, each 40" long and 1/4" to 1/2" wide. The material should be washable, durable, and not slippery. Model used 3/8" grosgrain ribbon.



➤ Optional but helpful

- Glue stick
- Frixion pen. A nice fabric marker because a warm iron will remove the marks.

## Instructions

1. Layer all 3 pieces of fabric in a neat stack with edges together. The top and middle fabrics will end up on the outside after the mask is turned right side out. If these two pieces have a right side, then place them with right sides facing together. If they have a directional pattern, make sure it is oriented horizontally. The long edges of the fabric are the top and bottom. It does not matter which way the bottom fabric faces because this piece will be hidden inside the mask.



2. Pin all layers together. Mark the top edge  $2\frac{3}{8}$ " from each side (arrows). This is where you will leave a hole for turning and it will allow you to insert the wire easily. Sew, using a  $\frac{1}{2}$ " seam allowance.





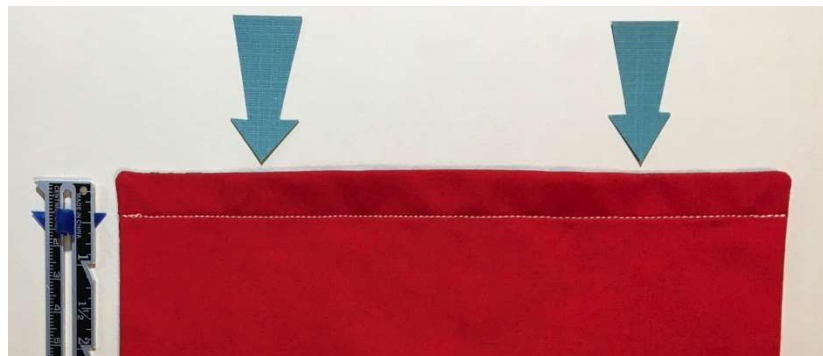
- Trim corners and turn right side out. Arrows in the photo mark the turning hole. Turn the raw edges of the opening under. Press.



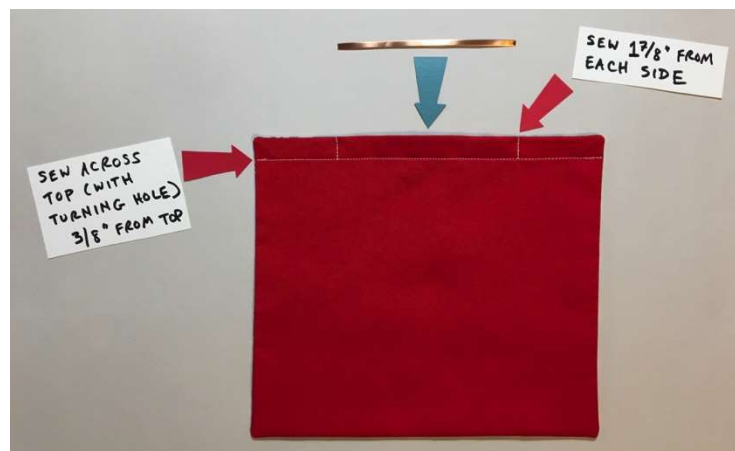
S

turning hole),  $\frac{3}{8}$ " from the edge.

across the top edge (with the



- Mark the top edge  $1\frac{7}{8}$ " from each side. Sew a line at both of these points from the top edge to the stitch line you made in Step 4.



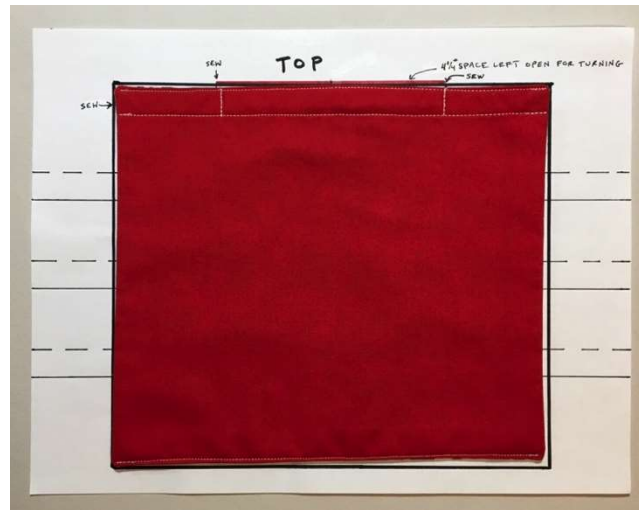
6. Insert the wire into the space you created in Steps 4 and 5. Snug it down close to the stitch line.



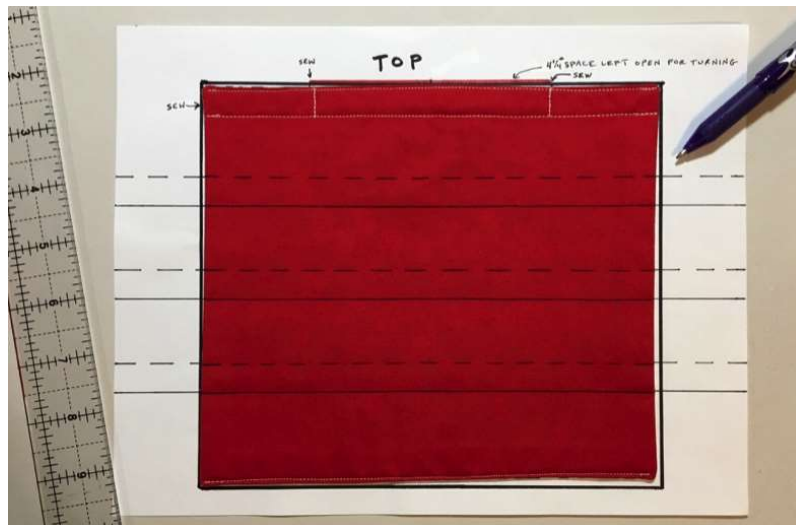
7. Sew across the top edge, sewing close to the edge and be careful not to strike the wire with your needle ☹️.



8. Lay the mask with back side facing up on the pleating template. (Template is on last page of instructions.)



9. Using a pen and ruler, mark solid and dashed lines across the back that correlate to the lines on the template.



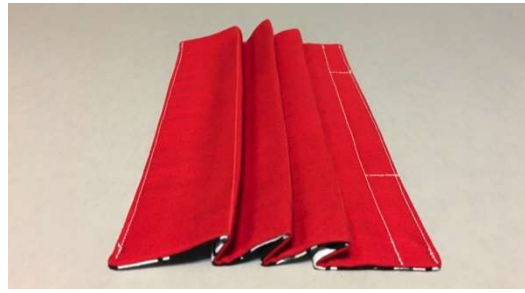
10. Starting at the first (top) dashed line, fold the mask with back sides together and press as shown.



11. You will now fold and press the mask in a zigzag fashion at each subsequent line. Dashed lines will have folds that point to the front and solid lines will have folds that point to the back (see photos).







12. The final, pleated size of the mask should be 8" wide and 4" tall.



13. Pin the pleats securely in place. Be careful not to crowd them so that they stack on top of each other. This will result in many layers of fabric and broken machine needles! ☹ Increase the stitch length of your sewing machine to its maximum and machine baste approximately 1/8" from each end along both sides to hold the pleats in place.

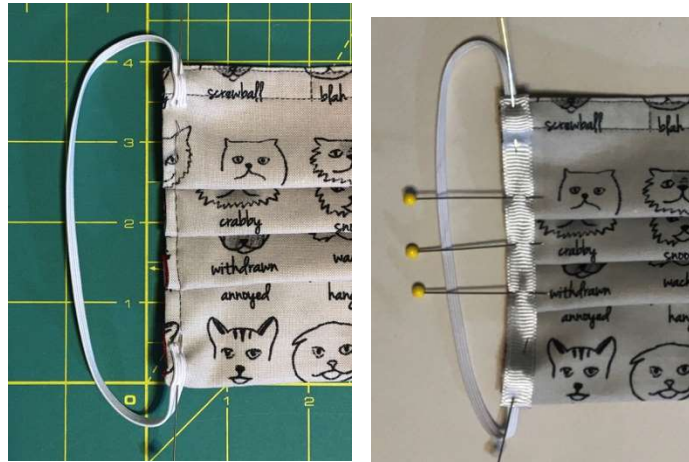


#### If you are using elastic:

1. Press under the ends of the 5" grosgrain ribbon (or other material to secure the ends of the pleats) so that its finished length matches your mask, as shown. Applying glue stick glue to hold folded ends under can help make ribbon ends less unruly.

## 2. If you are using flat elastic:

- Tips on elastic length (for the 1/8" elastic on the model)
    - 2 x 8" - 8 1/2" pieces for a man's mask
    - 2 x 7" - 7 1/2" pieces for a woman's mask
  - But you will have to experiment with the material you have, depending on its stretchiness.
- A. Pin the elastic near the corners of the mask front as shown. Aim for overlap of 1/2" with the mask. Pin the grosgrain ribbon on top of the elastic and along the edge of the mask. Repeat with the other end of the mask.



- B. Sew securely, all around the edges of the ribbon and across the ends. Repeat with the other side. Also sew across the bottom edge of the mask, sewing close to the edge. Fini!



## 3. If you are using elastic cord, cut 2 pieces 15" long. The cord pictured is from [www.riogrande.com](http://www.riogrande.com), item # 635711. It is 1.1 mm thick and comes in spools of 570', enough for 225 masks. Cost is \$10.99.

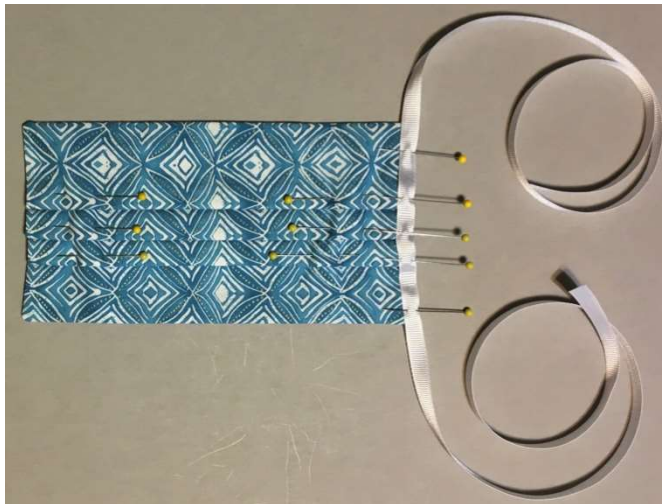
- A. Follow Step 1 under "If You Are Using Elastic" above. Then sew the ribbon to the mask, starting with the **inside** edge. Sew close to the edge but **DON'T** sew across the ends yet. Slip a piece of elastic cord under the ribbon and center it across the end of the mask. Now continue to sew across the end, along the outside edge and across the other end. Secure stitching well. Repeat with the other end of the mask. This creates an ear loop with length that can be customized by the wearer by tying the ends together at the appropriate length. See photos of finished mask below.





**If you are using long ties:**

1. Fold one of the tie pieces to find its center. Match this to the center of one of the sides of the mask. Pin and sew securely.



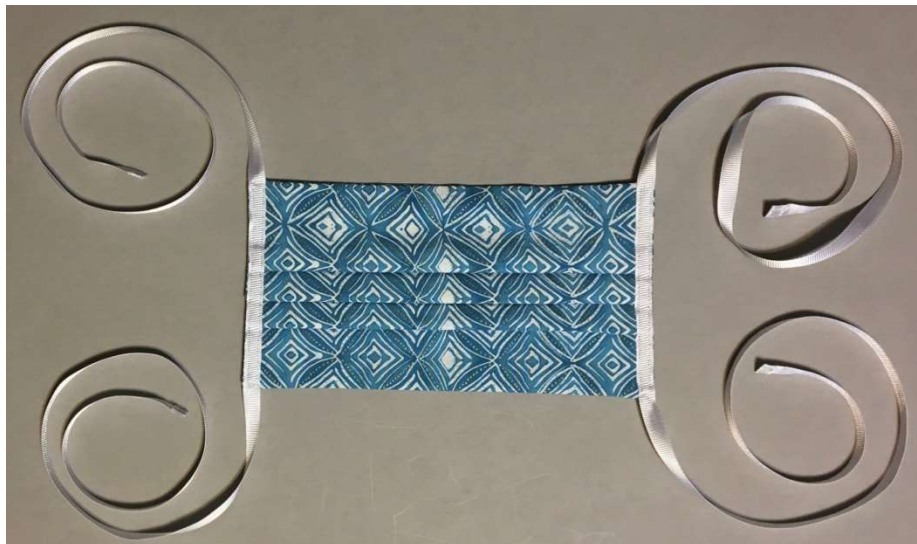
2. Repeat with the other side of the mask.



3. Secure the ends of the ties by folding, pressing and stitching. Applying glue from a glue stick can make this easier.



4. Finished!



TOP

